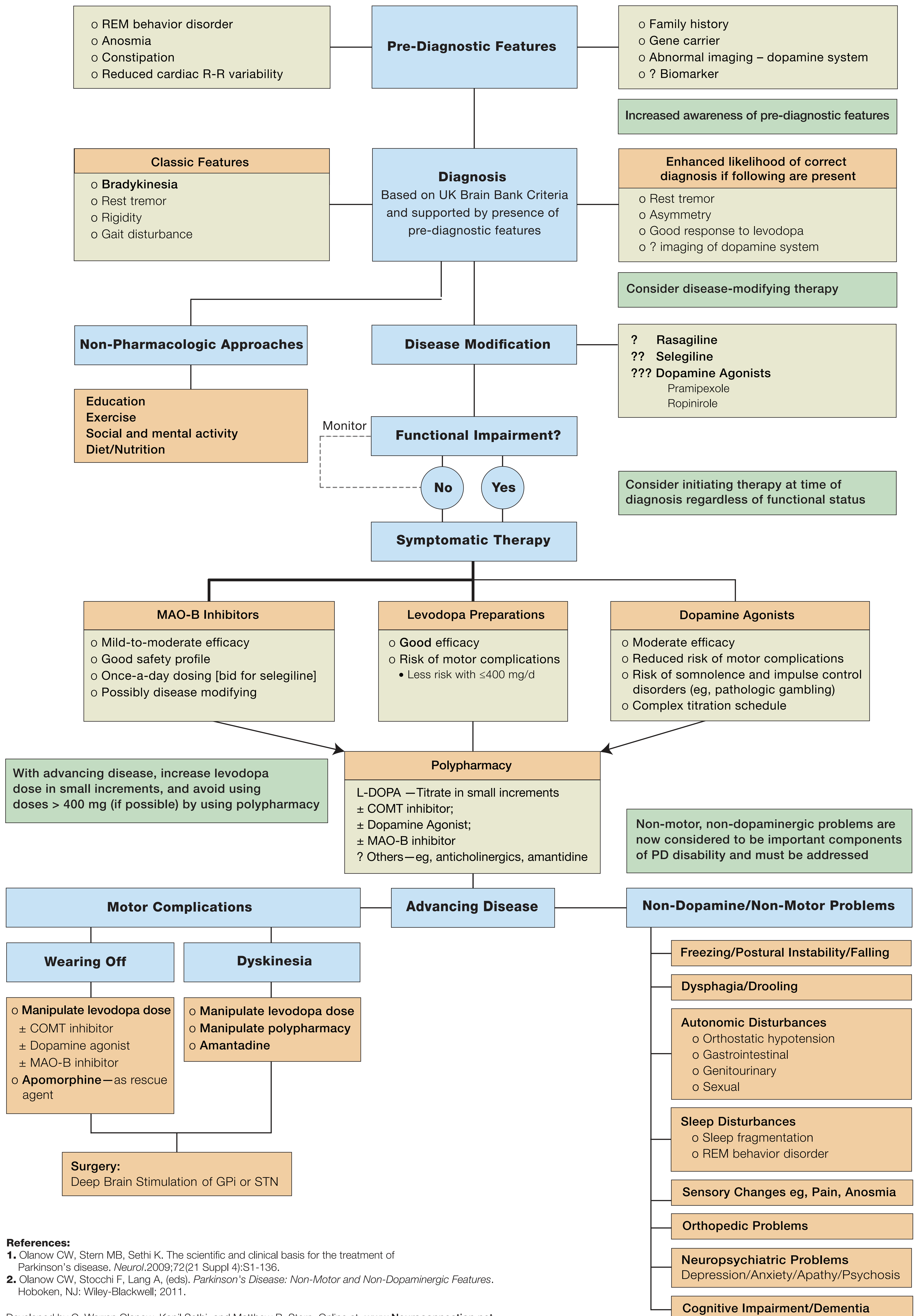


# Management of Parkinson's Disease 2012



**References:**

1. Olanow CW, Stern MB, Sethi K. The scientific and clinical basis for the treatment of Parkinson's disease. *Neurology*.2009;72(21 Suppl 4):S1-136.
2. Olanow CW, Stocchi F, Lang A, (eds). *Parkinson's Disease: Non-Motor and Non-Dopaminergic Features*. Hoboken, NJ: Wiley-Blackwell; 2011.